



HVAC | 2020

CANADIAN MSRP PRICE BOOK

Effective: January 1, 2020



IT LOOKS DIFFERENT BECAUSE IT *IS* DIFFERENT.



napoleon.com

TABLE OF CONTENTS

04

HEATING

- 4. 9700 Series
- 5. 9600 Series
- 6. 9600Q Series
- 7. 9500 Series

08

HYBRID SERIES

- 8. HMF150 Series
- 9. HMF200 Series

10

COOLING

- 10. Central Air Conditioners
- 11. Uncased Coils
- 12. Cased Coils
- 13. Winter AC Covers

14

HEAT PUMPS

- 14. Central Heat Pumps
- 14. Air Handlers

15

DUCTLESS

- 15. NC19 Series
- 15. NHAS Series
- 15. NH21 Series
- 16. NH25 Series
- 16. Multi-Zone Series

17

THERMOSTATS

18

INDOOR AIR QUALITY

- 18. HRVs / ERVs
- 19. Homesheild

20

CONDO PACKS

- 20. High Efficiency Gas
- 22. High Efficiency Electric

24 Napoleon Road, Barrie
Ontario, Canada L4M 0G8
Tel: 705.721.1212
napoleon.com

General Inquiries
hvac@napoleon.com

Technical Inquiries
hvacsupport@napoleon.com

Order Desk

Tel: 1.888.721.7253

HVACsales@napoleon.com

HEATING

9700 SERIES TWO STAGE

up to 97% Ultra High Efficiency Gas Furnace



FEATURES & BENEFITS

- Up to 97% AFUE
- HomeShield UV Furnace Lamp installed
- Fully Insulated Cabinet for WHISPER QUIET[™] Operation
- Modular Components
- Variable Speed Technology
- Patented Vortex Technology
- Two-Stage Heating
- Upflow Only
- SureView Burner Window

10 YEAR PARTS LIMITED WARRANTY

15 YEAR UNIT REPLACEMENT HEAT EXCHANGER LIMITED WARRANTY

LIFE TIME HEAT EXCHANGER LIMITED WARRANTY

FUEL TYPE

- Natural Gas or Propane

MODEL	HEATING CAPACITY BTU/H	BTU/H HIGH FIRE	BTU/H LOW FIRE	STATIC AIRFLOW RATE HIGH	STATIC AIRFLOW RATE LOW	CFM HIGH FIRE	CFM LOW FIRE	RETURN AIR (IN)	UNIT DIMENSIONS H X W X D (IN)	PLENUM OPENING W X L (IN)	WEIGHT (LBS)	MSRP
WUV040T2AA-N	40,000	40,000	24,000	ESP: 0.10" WC - 0.50" WC	ESP: 0.10" WC - 0.50" WC	606	414	14 X 23	34 x 17.5 x 31	16 1/2 x 19 5/8	137	\$3,281
WUV060T3AA-N	60,000	60,000	36,000	ESP: 0.12" WC - 0.50" WC	ESP: 0.12" WC - 0.50" WC	939	620	14 X 23	34 x 17.5 x 31	16 1/2 x 19 5/8	142	\$3,437
WUV080T3AA-N	80,000	80,000	48,000	ESP: 0.20" WC - 0.50" WC	ESP: 0.20" WC - 0.50" WC	1024	686	14 X 23	34 x 17.5 x 31	16 1/2 x 19 5/8	149	\$3,589
WUV080T4BA-N	80,000	80,000	48,000	ESP: 0.20" WC - 0.50" WC	ESP: 0.20" WC - 0.50" WC	1568	973	14 X 23	34 x 22.5 x 31	21 1/2 x 19 5/8	174	\$3,875
WUV100T5BA-N	100,000	100,000	60,000	ESP: 0.20" WC - 0.50" WC	ESP: 0.20" WC - 0.50" WC	1627	1116	14 X 23	34 x 22.5 x 31	21 1/2 x 19 5/8	169	\$4,229
WUV120T5BA-N	120,000	120,000	72,000	ESP: 0.20" WC - 0.50" WC	ESP: 0.20" WC - 0.50" WC	1905	1265	14 X 23	34 x 22.5 x 31	21 1/2 x 19 5/8	187	\$4,510

*Average static airflow rate. ** Ships as natural gas

OPTIONS/ACCESSORIES

MODEL	DESCRIPTION	MSRP/MAP
W370-0018	Conversion Kit - Natural Gas To Propane	\$177
W370-0019	Concentric Kit - 2"	\$141
W370-0020	Concentric Kit - 3"	\$178
W250-0009	MERV 11 Filter - 3 Pack (16 x 25)	\$131
NNA-NC1625-A	Napoleon HVAC Media Filter (MERV11) (16 x 25)	\$118
W250-0010	MERV 11 Filter - 3 Pack (20 x 25)	\$141
NNA-NC2025-A	Napoleon HVAC Media Filter (MERV11) (20 x 25)	\$131
UVB18	HomeShield Standard Grade 18W UV Replacement Lamp	\$63
NT144HCNPH	Napoleon 1H/1C Non Programmable Thermostat - Horizontal	\$57
NT144HCNPV	Napoleon 1H/1C Non Programmable Thermostat - Vertical	\$59
NT151HCPV	Napoleon 1H/1C 5/2-day Programmable Thermostat - Vertical	\$76
NT86HCEZ	Napoleon 1H/1C EZ Set Non Programmable Thermostat	\$83
NT953H2CP	Napoleon 3H/2C 7-day Programmable Thermostat - 12 sq.in. Touchscreen	\$282

IMPORTANT: PRODUCT MUST BE REGISTERED FOR FULL WARRANTY



HEATING

9600 SERIES TWO STAGE

up to 96% High Efficiency Gas Furnace



FEATURES & BENEFITS

- Up to 96% AFUE
- Optional UV HomeShield Furnace Lamp
- WHISPER QUIET™ Operation
- Modular Components
- Variable Speed Technology
- Patented Vortex Technology
- Two-Stage Heating
- Flexfit - Upflow, Right, Left, Down
- SureView Burner Window

10 YEAR PARTS LIMITED WARRANTY

10 YEAR UNIT REPLACEMENT HEAT EXCHANGER LIMITED WARRANTY

LIFE TIME HEAT EXCHANGER LIMITED WARRANTY

FUEL TYPE

- Natural Gas or Propane

MODEL	HEATING CAPACITY BTU/H	BTU/H HIGH FIRE	BTU/H LOW FIRE	STATIC AIRFLOW RATE HIGH	STATIC AIRFLOW RATE LOW	CFM HIGH FIRE	CFM LOW FIRE	RETURN AIR (IN)	UNIT DIMENSIONS H X W X D (IN)	PLENUM OPENING W X L (IN)	WEIGHT (LBS)	MSRP
WPV040T2AA-N	40,000	40,000	24,000	ESP: 0.10" WC - 0.50" WC	ESP: 0.10" WC - 0.50" WC	606	414	14 X 23	34 x 17.5 x 29.5	16 1/2 x 19 5/8	126	\$2,293
WPV060T3AA-N	60,000	60,000	36,000	ESP: 0.12" WC - 0.50" WC	ESP: 0.12" WC - 0.50" WC	939	620	14 X 23	34 x 17.5 x 29.5	16 1/2 x 19 5/8	130	\$2,429
WPV080T3AA-N	80,000	80,000	48,000	ESP: 0.20" WC - 0.50" WC	ESP: 0.20" WC - 0.50" WC	1568	686	14 X 23	34 x 17.5 x 29.5	16 1/2 x 19 5/8	137	\$2,579
WPV080T4BA-N	80,000	80,000	48,000	ESP: 0.20" WC - 0.50" WC	ESP: 0.20" WC - 0.50" WC	1568	973	14 X 23	34 x 22.5 x 29.5	21 1/2 x 19 5/8	158.15	\$2,748
WPV100T5BA-N	100,000	100,000	60,000	ESP: 0.20" WC - 0.50" WC	ESP: 0.20" WC - 0.50" WC	1627	116	14 X 23	34 x 22.5 x 29.5	21 1/2 x 19 5/8	163	\$2,926
WPV120T5BA-N	120,000	120,000	72,000	ESP: 0.20" WC - 0.50" WC	ESP: 0.20" WC - 0.50" WC	1905	1265	14 X 23	34 x 22.5 x 29.5	21 1/2 x 19 5/8	170.25	\$3,121

*Average static airflow rate. ** Ships as natural gas

OPTIONS/ACCESSORIES

MODEL	DESCRIPTION	MSRP/MAP
W370-0018	Conversion Kit - Natural Gas To Propane	\$177
W370-0019	Concentric Kit - 2"	\$141
W370-0020	Concentric Kit - 3"	\$178
W250-0009	MERV 11 Filter - 3 Pack (16 x 25)	\$131
NNA-NC1625-A	Napoleon HVAC Media Filter (MERV11) (16 x 25)	\$118
W250-0010	MERV 11 Filter - 3 Pack (20 x 25)	\$141
NNA-NC2025-A	Napoleon HVAC Media Filter (MERV11) (20 x 25)	\$131
UVB18	HomeShield Standard Grade 18W UV Replacement Lamp	\$63
NT144HCNPH	Napoleon 1H/1C Non Programmable Thermostat - Horizontal	\$57
NT144HCNPV	Napoleon 1H/1C Non Programmable Thermostat - Vertical	\$59
NT144HCNPH	Napoleon 1H/1C Non Programmable Thermostat - Horizontal	\$57
NT144HCNPV	Napoleon 1H/1C Non Programmable Thermostat - Vertical	\$59
NT953H2CP	Napoleon 3H/2C 7-day Programmable Thermostat - 12 sq.in. Touchscreen	\$282

IMPORTANT: PRODUCT MUST BE REGISTERED FOR FULL WARRANTY

Wolf Steel reserves the right to make changes to prices and product without notice. Products may not be exactly as shown.



HEATING

9600Q SERIES TWO STAGE

up to 96% High Efficiency Gas Furnace



FEATURES & BENEFITS

- Up to 96% AFUE
- WHISPER QUIET Operation
- Modular Components
- Patented Vortex Technology
- Two-Stage Heating
- FlexFit - Upflow, Right

FUEL TYPE

- Natural Gas or Propane

3 YEAR PARTS LIMITED WARRANTY

15 YEAR HEAT EXCHANGER LIMITED WARRANTY

10 YEAR PARTS LIMITED WARRANTY

20 YEAR HEAT EXCHANGER LIMITED WARRANTY

Home owner can purchase an extended warranty

MODEL	HEATING CAPACITY BTU/H	BTU/H HIGH FIRE	BTU/H LOW FIRE	STATIC AIRFLOW RATE HIGH	STATIC AIRFLOW RATE LOW	CFM HIGH FIRE	CFM LOW FIRE	RETURN AIR (IN)	UNIT DIMENSIONS H X W X D (IN)	PLENUM OPENING W X L (IN)	WEIGHT (LBS)	MSRP
WSX040T2AA-N	40,000	40,000	28,000	ESP: 0.10" WC - 0.50" WC	ESP: 0.10" WC - 0.50" WC	606	414	14 X 23	34 x 17.5 x 29.5	16 1/2 x 19 5/8	58	\$1,752
WSX060T3AA-N	60,000	60,000	42,000	ESP: 0.12" WC - 0.50" WC	ESP: 0.12" WC - 0.50" WC	939	620	14 X 23	34 x 17.5 x 29.5	16 1/2 x 19 5/8	131	\$1,860
WSX080T3AA-N	80,000	80,000	56,000	ESP: 0.20" WC - 0.50" WC	ESP: 0.20" WC - 0.50" WC	1024	686	14 X 23	34 x 17.5 x 29.5	16 1/2 x 19 5/8	141	\$2,074

*Average static airflow rate. ** Ships as natural gas

OPTIONS/ACCESSORIES

MODEL	DESCRIPTION	MSRP/MAP
W370-0018	Conversion Kit - Natural Gas To Propane	\$177
W370-0019	Concentric Kit - 2"	\$141
W370-0020	Concentric Kit - 3"	\$178
W250-0009	MERV 11 Filter - 3 Pack (16 x 25)	\$131
NNA-NC1625-A	Napoleon HVAC Media Filter (MERV11) (16 x 25)	\$118
W250-0010	MERV 11 Filter - 3 Pack (20 x 25)	\$141
NNA-NC2025-A	Napoleon HVAC Media Filter (MERV11) (20 x 25)	\$131
NT144HCNPH	Napoleon 1H/1C Non Programmable Thermostat - Horizontal	\$57
NT144HCNPV	Napoleon 1H/1C Non Programmable Thermostat - Vertical	\$59
NT151HCPV	Napoleon 1H/1C 5/2-day Programmable Thermostat - Vertical	\$76
NT86HCEZ	Napoleon 1H/1C EZ Set Non Programmable Thermostat	\$83
NT953H2CP	Napoleon 3H/2C 7-day Programmable Thermostat - 12 sq.in. Touchscreen	\$282



HEATING

9500 SERIES SINGLE STAGE

up to 95% High Efficiency Gas Furnace



FEATURES & BENEFITS

- Up to 95% AFUE
- WHISPER QUIET™ Operation
- Modular Components
- Vortex Technology
- Multi-Speed Technology
- Single-Stage Heating
- Flexfit - Upflow, Right, Left, Down

FUEL TYPE

- Natural Gas or Propane

10 YEAR PARTS LIMITED WARRANTY

10 YEAR UNIT REPLACEMENT HEAT EXCHANGER LIMITED WARRANTY

LIFE TIME HEAT EXCHANGER LIMITED WARRANTY

MODEL	HEATING CAPACITY BTU/H	BTU/H HIGH FIRE	STATIC AIRFLOW RATE HIGH	CFM HIGH FIRE	RETURN AIR (IN)	UNIT DIMENSIONS H X W X D (IN)	PLENUM OPENING W X L (IN)	WEIGHT (LBS)	MSRP
WPX030S2AA-N	30,000	30,000	ESP: 0.50" WC - 0.10" WC	569	14 X 23	34 x 17.5 x 29.5	16 1/2 x 19 5/8	121	\$1,831
WPX040S2AA-N	40,000	40,000	ESP: 0.50" WC - 0.10" WC	569	14 X 23	34 x 17.5 x 29.5	16 1/2 x 19 5/8	120	\$1,961
WPX060S3AA-N	60,000	60,000	ESP: 0.50" WC - 0.12" WC	1192	14 X 23	34 x 17.5 x 29.5	16 1/2 x 19 5/8	128	\$1,973
WPX080S3AA-N	80,000	80,000	ESP: 0.50" WC - 0.20" WC	1024	14 X 23	34 x 17.5 x 29.5	16 1/2 x 19 5/8	134	\$2,134
WPX100S5BA-N	100,000	100,000	ESP: 0.50" WC - 0.20" WC	1470	14 X 23	34 x 22.5 x 29.5	21 1/2 x 19 5/8	163	\$2,416

*Average static airflow rate. ** Ships as natural gas

OPTIONS/ACCESSORIES

MODEL	DESCRIPTION	MSRP/MAP
W370-0018	Conversion Kit - Natural Gas To Propane	\$177
W370-0019	Concentric Kit - 2"	\$141
W370-0020	Concentric Kit - 3"	\$178
W370-0027	Horizontal Installation Kit - 95% Gas Furnace	\$51
W370-0032	Furnace Twinning Kit	\$394
W250-0009	MERV 11 Filter - 3 Pack (16 x 25)	\$131
NNA-NC1625-A	Napoleon HVAC Media Filter (MERV11) (16 x 25)	\$118
W250-0010	MERV 11 Filter - 3 Pack (20 x 25)	\$141
NNA-NC2025-A	Napoleon HVAC Media Filter (MERV11) (20 x 25)	\$131
NT144HCNPH	Napoleon 1H/1C Non Programmable Thermostat - Horizontal	\$57
NT144HCNPV	Napoleon 1H/1C Non Programmable Thermostat - Vertical	\$59
NT151HCPV	Napoleon 1H/1C 5/2-day Programmable Thermostat - Vertical	\$76
NT86HCEZ	Napoleon 1H/1C EZ Set Non Programmable Thermostat	\$83
NT953H2CP	Napoleon 3H/2C 7-day Programmable Thermostat - 12 sq.in. Touchscreen	\$282

IMPORTANT: PRODUCT MUST BE REGISTERED FOR FULL WARRANTY

Wolf Steel reserves the right to make changes to prices and product without notice. Products may not be exactly as shown.



HYBRID SERIES

HMF150 SERIES HYBRID



MODEL	HEATING CAPACITY BTU/H	BTU/H HIGH FIRE	RETURN AIR (IN)	UNIT DIMENSIONS H X W X D (IN)	PLENUM OPENING W X L (IN)	WEIGHT (LBS)	MSRP
HMF150	150,000	150,000	14 X 23	51.25 x 29.125 x 32	24 x 22	700	\$4,779
OPTIONS							
NNA-NC1625-A	Napoleon HVAC Media Filter (MERV11) (16 x 25)					15	\$118
W250-0009	MERV 11 Filter - 3 Pack (16 x 25)					n/a	\$131
ADD-ON AIR CONDITIONING CONTROLS							
HMFK-AC1	Bypass Damper Position Switch Kit					n/a	\$128
HMFK-AC2	HMFK-BMP50 Air Conditioning Blower Relay Kit					n/a	\$199
<i>HMFK-AC2 to be used with any AC install using HMFK-BMP50</i>							
DOORS - MUST CHOOSE HMFK-GLASS OR HMFK-SOLID DOOR TO COMPLETE FURNACE							
HMFK-GLASS	Cast Iron Door with Ceramic Viewing Glass					n/a	\$324
HMFK-SOLID	Cast Iron Door with Ceramic Fibre Insulation and Cover					n/a	\$416
ADD-ON TO NAPOLEON GAS FURNACES							
HMFK-ADDON	Add-On Module (Relay to Inter-Connect Existing Furnace)					n/a	\$74
HMFK-GT	Transition Box (To connect HMF150 to Gas Furnace)					n/a	\$405
<i>Napoleon gas furnace. Select from Napoleon 9500/9600 Series - 60,000 or 80,000 BTU units</i>							
ADD-ON TO EXISTING GAS FURNACES							
HMFK-ADDON	Add-On Module (Relay to Inter-Connect Existing Furnace)					n/a	\$74
WOOD ONLY CONFIGURATION							
HMFK-BMP50-1	Blower Box Cabinet - Complete with 4-speed, 1400 CFM Blower					n/a	\$832
WOOD/OIL CONFIGURATION							
HMFK-BMP50-1	Blower Box Cabinet - Complete with 4-speed, 1400 CFM Blower					n/a	\$832
HMFK-CMBCH-1	Stainless Steel Oil combustion Chamber and Heat Exchanger Module					n/a	\$2,617
HMFK-ORRF40	Oil Burner Module - Riello with Mounting Collar and Protective Cover					n/a	\$1,473
Or							
HMFK-OFBNX	Oil Burner Module - Beckett					n/a	\$1,349
HMFK-WM0	KIT, WMO THERMAL SAFETY SWITCH					n/a	\$110
WOOD/ELECTRIC CONFIGURATION							
HMFK-BMP50-1	Blower Box Cabinet - Complete with 4-speed, 1400 CFM Blower					n/a	\$832
HMFK-EF15	Electric Furnace Module (15kw)					n/a	\$1,349
HMFK-EF18	Electric Furnace Module (18kw)					n/a	\$1,349
HMFK-EF20	Electric Furnace Module (20kw)					n/a	\$1,349
WOOD/OIL/ELECTRIC CONFIGURATION							
HMFK-BMP50-1	Blower Box Cabinet - Complete with 4-speed, 1400 CFM Blower					n/a	\$832
HMFK-CMBCH-1	Stainless Steel Oil combustion Chamber and Heat Exchanger Module					n/a	\$2,617
HMFK-EF15	Electric Furnace Module (15kw)					n/a	\$1,349
HMFK-EF18	Electric Furnace Module (18kw)					n/a	\$1,349
HMFK-EF20	Electric Furnace Module (20kw)					n/a	\$1,349
HMFK-WM0	KIT, WMO THERMAL SAFETY SWITCH					n/a	\$110
HMFK-BIEK	Bi-Energy Kit - Optional Quebec Use Only					n/a	\$182
HMFK-ORRF40	Oil Burner Module - Riello with Mounting Collar and Protective Cover					n/a	\$1,473
Or							
HMFK-OFBNX	Oil Burner Module - Beckett					n/a	\$1,349

FEATURES & BENEFITS

- 40,000 - 60,000 BTU's
- Multiple Configurations Available
- Wood Furnace
- Oil Furnace
- Gas Furnace
- Electric Furnace
- Hybrid Wood Burning Cycle



HYBRID SERIES

HMF200 SERIES HYBRID



FEATURES & BENEFITS

- 60,000 - 100,000 BTU's
- Hybrid Wood Burning Cycle
- Multiple Configurations Available
- Wood Furnace
- Oil Furnace
- Gas Furnace
- Electric Furnace



MODEL	HEATING CAPACITY BTU/H	BTU/H HIGH FIRE	RETURN AIR (IN)	UNIT DIMENSIONS H X W X D (IN)	PLENUM OPENING W X L (IN)	WEIGHT (LBS)	MSRP
HMF200	200,000	200,000	14 X 23	51.25 x 29.125 x 39	31 x 22	830	\$5,600
OPTIONS							
NNA-NC1625-A	Napoleon HVAC Media Filter (MERV11) (16 x 25)					15	\$118
W250-0009	MERV 11 Filter - 3 Pack (16 x 25)					n/a	\$131
ADD-ON AIR CONDITIONING CONTROLS							
HMFK-AC1	Bypass Damper Position Switch Kit					n/a	\$128
HMFK-AC2	HMFK-BMP50 Air Conditioning Blower Relay Kit					n/a	\$199
<i>HMFK-AC2 to be used with any AC install using HMFK-BMP50</i>							
DOORS - MUST CHOOSE HMFK-GLASS OR HMFK-SOLID DOOR TO COMPLETE FURNACE							
HMFK-GLASS	Cast Iron Door with Ceramic Viewing Glass					n/a	\$324
HMFK-SOLID	Cast Iron Door with Ceramic Fibre Insulation and Cover					n/a	\$416
ADD-ON TO NAPOLEON GAS FURNACES							
HMFK-ADDON	Add-On Module (Relay to Inter-Connect Existing Furnace)					n/a	\$74
HMFK-GT	Transition Box (To connect HMF150 to Gas Furnace)					n/a	\$405
HMFK-GT-LG	HMF/Gas Furnace Transition Kit 80-4/100/120					n/a	\$432
<i>Napoleon gas furnace. Select from Napoleon 9500/9600 Series - 80,000 or 100,000 BTU units</i>							
ADD-ON TO EXISTING GAS FURNACES							
HMFK-ADDON	Add-On Module (Relay to Inter-Connect Existing Furnace)					n/a	\$74
WOOD ONLY CONFIGURATION							
HMFK-BMP50-1	Blower Box Cabinet - Complete with 4-speed, 1400 CFM Blower					n/a	\$832
WOOD/OIL CONFIGURATION							
HMFK-BMP50-1	Blower Box Cabinet - Complete with 4-speed, 1400 CFM Blower					n/a	\$832
HMFK-CCH200	Stainless Steel Oil Combustion Chamber and Heat Exchanger Module					n/a	\$2,693
HMFK-ORRF40	Oil Burner Module - Riello with Mounting Collar and Protective Cover					n/a	\$1,473
<i>Or</i>							
HMFK-OFBNX	Oil Burner Module - Beckett					n/a	\$1,349
HMFK-WMO	KIT, WMO THERMAL SAFETY SWITCH					n/a	\$110
WOOD/ELECTRIC CONFIGURATION							
HMFK-BMP50-1	Blower Box Cabinet - Complete with 4-speed, 1400 CFM Blower					n/a	\$832
HMFK-EF18	Electric Furnace Module (18kw)					n/a	\$1,349
HMFK-EF20	Electric Furnace Module (20kw)					n/a	\$1,349
HMFK-EF25	Electric Furnace Module (25 kw)					n/a	\$1,597
WOOD/OIL/ELECTRIC CONFIGURATION							
HMFK-BMP50-1	Blower Box Cabinet - Complete with 4-speed, 1400 CFM Blower					n/a	\$832
HMFK-CCH200	Stainless Steel Oil Combustion Chamber and Heat Exchanger Module					n/a	\$2,693
HMFK-EF18	Electric Furnace Module (18kw)					n/a	\$1,349
HMFK-EF20	Electric Furnace Module (20kw)					n/a	\$1,349
HMFK-EF25	Electric Furnace Module (25 kw)					n/a	\$1,597
HMFK-WMO	KIT, WMO THERMAL SAFETY SWITCH					n/a	\$110
HMFK-BIEK	Bi-Energy Kit - Optional Quebec Use Only					n/a	\$182
HMFK-ORRF40	Oil Burner Module - Riello with Mounting Collar and Protective Cover					n/a	\$1,473
<i>Or</i>							
HMFK-OFBNX	Oil Burner Module - Beckett					n/a	\$1,349

IMPORTANT: PRODUCT MUST BE REGISTERED FOR FULL WARRANTY

Wolf Steel reserves the right to make changes to prices and product without notice. Products may not be exactly as shown.





FEATURES & BENEFITS

- WHISPER QUIET Operation
- Quality Filter Drier - Factory Installed
- Contoured Blades
- Micro-Channel Condenser Coil

10 YEAR PARTS LIMITED WARRANTY

10 YEAR COMPRESSOR LIMITED WARRANTY

NT 13 SEER Air Conditioner Series

MODEL	DETAILS	SEER	MAX FUSE/BREAKER (AMP)	COOLING CAPACITY	LINE SET DIAMETER LIQUID (IN)	LINE SET DIAMETER SUCTION (IN)	WEIGHT (LBS)	MSRP
NT13A018B	Napoleon 13 SEER Air Conditioner - 1.5 TON	13	20	18,300	3/8	3/4	150	\$1,583
NT13A024B	Napoleon 13 SEER Air Conditioner - 2 TON	13	25	22,800	3/8	3/4	150	\$1,704
NT13A030B	Napoleon 13 SEER Air Conditioner - 2.5 TON	13	25	27,800	3/8	3/4	150	\$1,979
NT13A036B	Napoleon 13 SEER Air Conditioner - 3 TON	13	30	33,800	3/8	3/4	180	\$2,106
NT13A042B	Napoleon 13 SEER Air Conditioner - 3.5 TON	13	35	37,800	3/8	7/8	180	\$2,599
NT13A048B	Napoleon 13 SEER Air Conditioner - 4 TON	13	40	45,000	3/8	7/8	230	\$2,801
NT13A060B	Napoleon 13 SEER Air Conditioner - 5 TON	13	50	53,500	3/8	7/8	230	\$3,259

NT 14 SEER Air Conditioner Series

MODEL	DETAILS	SEER	MAX FUSE/BREAKER (AMP)	COOLING CAPACITY	LINE SET DIAMETER LIQUID (IN)	LINE SET DIAMETER SUCTION (IN)	WEIGHT (LBS)	MSRP
NT14A018B	Napoleon 14 SEER Air Conditioner - 1.5 TON	14	20	18,800	3/8	3/4	150	\$1,919
NT14A024B	Napoleon 14 SEER Air Conditioner - 2 TON	14	25	23,400	3/8	3/4	150	\$2,021
NT14A030B	Napoleon 14 SEER Air Conditioner - 2.5 TON	14.5	25	28,600	3/8	3/4	180	\$2,307
NT14A036B	Napoleon 14 SEER Air Conditioner - 3 TON	14	30	33,800	3/8	3/4	180	\$2,439
NT14A042B	Napoleon 14 SEER Air Conditioner - 3.5 TON	14	35	38,000	3/8	7/8	230	\$2,845
NT14A048B	Napoleon 14 SEER Air Conditioner - 4 TON	14	40	44,000	3/8	7/8	230	\$3,024
NT14A060B	Napoleon 14 SEER Air Conditioner - 5 TON	14	50	53,500	3/8	7/8	250	\$3,499

NT 16 SEER Air Conditioner Series

MODEL	DETAILS	SEER	MAX FUSE/BREAKER (AMP)	COOLING CAPACITY	LINE SET DIAMETER LIQUID (IN)	LINE SET DIAMETER SUCTION (IN)	WEIGHT (LBS)	MSRP
NT16A018B	Napoleon 16 SEER Air Conditioner - 1.5 TON	15	20	19,100	3/8	3/4	180	\$2,146
NT16A024B	Napoleon 16 SEER Air Conditioner - 2 TON	15	25	24,000	3/8	3/4	180	\$2,261
NT16A030B	Napoleon 16 SEER Air Conditioner - 2.5 TON	15	25	29,400	3/8	3/4	180	\$2,553
NT16A036B	Napoleon 16 SEER Air Conditioner - 3 TON	15	30	35,600	3/8	3/4	230	\$2,669
NT16A042B	Napoleon 16 SEER Air Conditioner - 3.5 TON	15	35	41,500	3/8	7/8	230	\$3,087
NT16A048B	Napoleon 16 SEER Air Conditioner - 4 TON	15	40	45,000	3/8	7/8	250	\$3,270
NT16A060B	Napoleon 16 SEER Air Conditioner - 5 TON	14.5	50	56,500	3/8	7/8	250	\$3,759



COILS

UNCASED COILS

Recommended for use with
NT 13/14 and 16 SEER air conditioners



NOTE

Our AC systems are certified with a 3rd party coil manufacturer, and we are not responsible for the actions which affect all third party ratings that can change without notice. A great practice is to go on the AHRI site and download the certificate before ordering to make sure it is still listed. This way you will always have the ratings on file which can be used for references later.

UPFLOW WITH PISTON	DESCRIPTION	DIMENSIONS	WEIGHT (LBS)	MSRP/MAP
HE21118A140A0004AP	Generic Service Coil - 1.5 Ton	14" W x 19 1/2" D x 13" H	20	\$479
HE21124A140A0004AP	Generic Service Coil - 2.0 Ton	14" W x 19 1/2" D x 13" H	20	\$479
HE31130A155A0000AP	Generic Service Coil - 2.5 Ton	15 1/2" W x 19 1/2" D x 13" H	24	\$604
HE32136A155A0000AP	Generic Service Coil - 3.0 Ton	15 1/2" W x 19 1/2" D x 15" H	28	\$671
HE34142A200A0004AP	Generic Service Coil - 3.5 Ton	20" W x 19 1/2" D x 19" H	35	\$877
HE35148A200A0004AP	Generic Service Coil - 4.0 Ton	20" W x 19 1/2" D x 21" H	39	\$932
HE36160A200A0004AP	Generic Service Coil - 5.0 Ton	20" W x 19 1/2" D x 23" H	41	\$1,085

UPFLOW WITH TXV	13 SEER AC	AHRI#	SEER	EER	DIMENSIONS	WEIGHT (LBS)	MSRP/MAP
HE21924A140A0000AP	NT13A018B	203404700	13	11	14" W x 19 1/2" D x 13" H	20	\$578
	NT13A024B	203404701	13	11	14" W x 19 1/2" D x 13" H	20	\$578
HE32936A155A0000AP	NT13A030B	10296109	13	11	15 1/2" W x 19 1/2" D x 15" H	28	\$777
	NT13A036B	10296110	13	11	15 1/2" W x 19 1/2" D x 15" H	28	\$777
HE35948A200A0000AP	NT13A042B	10296111	13	11	20" W x 19 1/2" D x 21" H	39	\$1,005
	NT13A048B	10296112	13	11	20" W x 19 1/2" D x 21" H	39	\$1,005
HE37960A200A0000AP	NT13A060B	202613409	13	11	20" W x 19 1/2" D x 25" H	54	\$1,215

UPFLOW WITH TXV	14 SEER AC	AHRI#	SEER	EER	DIMENSIONS	WEIGHT (LBS)	MSRP/MAP
HE32936A155A0000AP	NT14A018B	203404699	14	12.2	15 1/2" W x 19 1/2" D x 15" H	28	\$777
	NT14A024B	10513758	14	12	15 1/2" W x 19 1/2" D x 15" H	28	\$777
HE32936A155A0000AP	NT14A030B	10513761	15	12.2	15 1/2" W x 19 1/2" D x 15" H	28	\$777
	NT14A036B	10513762	14	12	15 1/2" W x 19 1/2" D x 15" H	28	\$777
HE35948A200A0000AP	NT14A042B	10513747	14	11.7	20" W x 19 1/2" D x 21" H	39	\$1,005
HE37960A200A0000AP	NT14A048B	10513750	14	11.5	20" W x 19 1/2" D x 25" H	45	\$1,215
	NT14A060B	10513753	14	11.5	20" W x 19 1/2" D x 25" H	45	\$1,215

UPFLOW WITH TXV	16 SEER AC	AHRI#	SEER	EER	DIMENSIONS	WEIGHT (LBS)	MSRP/MAP
HE32936A155A0000AP	NT16A018B	10581071	15	12.5	15 1/2" W x 19 1/2" D x 15" H	28	\$777
	NT16A024B	10581074	15	12.5	15 1/2" W x 19 1/2" D x 15" H	28	\$777
HE36936A155A0000AP	NT16A030B	10581076	14.5	12.5	15 1/2" W x 19 1/2" D x 23" H	41	\$1,156
	NT16A036B	10581078	14.5	12.5	15 1/2" W x 19 1/2" D x 23" H	41	\$1,156
HE50960A205A0000AP	NT16A042B	10581069	15	12.5	20 1/2" W x 19 1/2" D x 27" H	50	\$1,462
	NT16A048B	10581064	15	12.5	20 1/2" W x 19 1/2" D x 27" H	50	\$1,462
	NT16A060B	10581066	14.5	12	20 1/2" W x 19 1/2" D x 27" H	50	\$1,462

IMPORTANT: PRODUCT MUST BE REGISTERED FOR FULL WARRANTY

Wolf Steel reserves the right to make changes to prices and product without notice. Products may not be exactly as shown.



COILS

CASED COILS

Recommended for use with
NT 13/14 and 16 SEER air conditioners



UPFLOW WITH TXV	13 SEER AC	AHRI#	SEER	EER	DIMENSIONS	WEIGHT (LBS)	MSRP/MAP
DE30924C175B1205AP	NT13A018A/B	10296106	13	11	17 1/2" W x 20 1/2" D x 12 1/2" H	32	\$723
DE30924C175B1205AP	NT13A024A/B	10296108	13	11	17 1/2" W x 20 1/2" D x 12 1/2" H	32	\$723
DE32936C175B1605AP	NT13A030A/B	10296109	13	11	17 1/2" W x 20 1/2" D x 16 1/2" H	38	\$858
DE32936C175B1605AP		10296110	13	11	17 1/2" W x 20 1/2" D x 16 1/2" H	44	\$858
DE35948C225B2505AP	NT13A042A/B	10296111	13	11	22 1/2" W x 20 1/2" D x 25 1/2" H	53	\$1,078
DE35948C225B2522AP		10296111	13	11	22 1/2" W x 20 1/2" D x 25 1/2" H	53	\$1,152
DE35948C225B2505AP	NT13A048A/B	10296112	13	11	22 1/2" W x 20 1/2" D x 25 1/2" H	53	\$1,078
DE35948C225B2522AP		10296112	13	11	22 1/2" W x 20 1/2" D x 25 1/2" H	53	\$1,152
DE48960C225B2705AP	NT13A060A/B	10296113	13	11	22 1/2" W x 20 1/2" D x 27 1/2" H	60	\$1,405

***Factory Installed TXV**

UPFLOW WITH TXV	14 SEER AC	AHRI#	SEER	EER	DIMENSIONS	WEIGHT (LBS)	MSRP/MAP
DE35936C175B2505AP	NT14A018A/B	10513757	14.5	12.2	17 1/2" W x 20 1/2" D x 25 1/2" H	60	\$974
DE35936C175B2522AP		10513757	14.5	12.2	17 1/2" W x 20 1/2" D x 25 1/2" H	60	\$1,225
DE36936C175B2505AP	NT14A024A/B	10513759	14.5	12.2	17 1/2" W x 20 1/2" D x 25 1/2" H	46	\$1,158
DE31930C175B1605AP	NT14A030A/B	10513760	15	12.5	17 1/2" W x 20 1/2" D x 16 1/2" H	38	\$892
DE31930C175B1622AP		10513760	15	12.5	17 1/2" W x 20 1/2" D x 16 1/2" H	38	\$864
DE37936C175B2505AP	NT14A036A/B	10513763	14.5	12.2	17 1/2" W x 20 1/2" D x 25 1/2" H	46	\$1,207
DE48960C225B2705AP	NT14A042A/B	10513748	14.5	12	22 1/2" W x 20 1/2" D x 27 1/2" H	60	\$1,405
DE50960C225B2722AP		10513749	14.5	12	22 1/2" W x 20 1/2" D x 27 1/2" H	72	\$1,711
DE52960C225B3105AP	NT14A048A/B	10513752	14.5	12	22 1/2" W x 20 1/2" D x 31 1/2" H	72	\$1,506
DE52960C225B3105AP	NT14A060A/B	10513755	14.5	12	22 1/2" W x 20 1/2" D x 31 1/2" H	72	\$1,506

***Coils with suffix 22A are multipositional**

UPFLOW WITH TXV	16 SEER AC	AHRI#	SEER	EER	DIMENSIONS	WEIGHT (LBS)	MSRP/MAP
DE31930C175B1605AP	NT16A018A/B	10324921	16	13	17 1/2" W x 20 1/2" D x 16 1/2" H	38	\$892
DE31930C175B1622AP		10324921	16	13	17 1/2" W x 20 1/2" D x 16 1/2" H	38	\$864
DE32936C175B1605AP	NT16A024A/B	10324931	16	13	17 1/2" W x 20 1/2" D x 16 1/2" H	44	\$858
DE32936C175B1622AP		10324931	16	13	17 1/2" W x 20 1/2" D x 16 1/2" H	46	\$943
DE47936C175B2905AP	NT16A030A/B	10581077	15	12.5	17 1/2" W x 20 1/2" D x 29 1/2" H	70	\$1,315
DE47936C175B2905AP	NT16A036A/B	10581079	15	12.5	17 1/2" W x 20 1/2" D x 29 1/2" H	70	\$1,315
DE48960C225B2705AP	NT16A042A/B	10581068	15	12.5	22 1/2" W x 20 1/2" D x 27 1/2" H	60	\$1,405
DE50960C225B2722AP	NT16A048A/B	10581064	15	12.5	22 1/2" W x 20 1/2" D x 27 1/2" H	72	\$1,711
DE50960C225B2722AP	NT16A060A/B	10581066	14.5	12	22 1/2" W x 20 1/2" D x 27 1/2" H	72	\$1,711



COVERS

WINTER AC COVERS



Winter AC Cover

WINTER COVER	DESCRIPTION	WEIGHT (LBS)	DIMENSIONS W X D (IN)	MSRP
NCR-2427	Napoleon Air Conditioner Cover (24 x 27)	1.6	24 x 27	\$62
NCR-2927	Napoleon Air Conditioner Cover (29 x 27)	2.1	29 x 27	\$72
NCR-2939	Napoleon Air Conditioner Cover (29 x 39)	2.7	29 x 39	\$77
NCR-2948	Napoleon Air Conditioner Cover (29 x 48)	3.3	29 x 48	\$81

A Revision

WINTER COVER	FITS	DESCRIPTION	WEIGHT (LBS)	DIMENSIONS W X D (IN)	MSRP
NCR-2427	NT13A018A NT13A024A NT14A018A NT14A024A	Napoleon Air Conditioner Cover (24 x 27)	1.6	24 x 27	\$62
NCR-2927	NT13A030A NT13A036A NT14A030A NT14A036A NT16A018A NT16A024A NT16A030A NT16A036A	Napoleon Air Conditioner Cover (29 x 27)	2.1	29 x 27	\$72
NCR-2939	NT13A042A NT13A048A NT14A042A NT14A048A NT16A042A NT16A048A	Napoleon Air Conditioner Cover (29 x 39)	2.7	29 x 39	\$77
	NT13A060A				

B Revision

WINTER COVER	FITS	DESCRIPTION	WEIGHT (LBS)	DIMENSIONS W X D (IN)	MSRP
NCR-2427	NT13A018B NT13A024B NT14A018B NT14A024B	Napoleon Air Conditioner Cover (24 x 27)	1.6	24 x 27	\$62
NCR-2927	NT13A030B NT13A036B NT14A030B NT14A036B NT16A018B NT16A024B NT16A030B NT16A036B	Napoleon Air Conditioner Cover (29 x 27)	2.1	29 x 27	\$72
NCR-2939	NT13A042B NT13A048B NT14A042B NT14A048B NT16A042B NT16A048B	Napoleon Air Conditioner Cover (29 x 39)	2.7	29 x 39	\$77
NCR-2948	NT13A060B NT14A060B NT16A060B	Napoleon Air Conditioner Cover (29 x 48)	3.3	29 x 48	\$81

HEAT PUMPS AND AIR HANDLERS

15 SEER HEAT PUMP

HEAT PUMP FEATURES & BENEFITS

- WHISPER QUIET Operation
- Contoured Blades
- Quality Compressor
- Tube & Fin Coil

10 YEAR PARTS LIMITED WARRANTY

10 YEAR COMPRESSOR LIMITED WARRANTY



MODEL	DESCRIPTION	WEIGHT (LBS)	MSRP/MAP
NT15H024A	NT Series 15 SEER Heat Pump - NT15H024A	160	\$3,263
NT15H030A	NT Series 15 SEER Heat Pump - NT15H030A	200	\$4,038
NT15H036A	NT Series 15 SEER Heat Pump - NT15H036A	230	\$4,273
NT15H042A	NT Series 15 SEER Heat Pump - NT15H042A	280	\$5,129
NT15H048A	NT Series 15 SEER Heat Pump - NT15H048A	280	\$5,877

16 SEER AIR HANDLER

AIR HANDLER FEATURES & BENEFITS

- Anti-Rust Cabinet Spray-Painted Galvanized Steel
- Fully Insulated Design for Quiet Operation
- Front Panel is Removable for Easy Maintenance
- Filter Rack Located at Bottom for Convenient Maintenance and Installation
- Quiet Operation
- Variable Speed Technology
- Flexfit - Upflow, Right, Left, Down

10 YEAR PARTS LIMITED WARRANTY



MODEL	DESCRIPTION	WEIGHT (LBS)	MSRP/MAP
WVA-18WN1-M16P-N	Napoleon 16 SEER Air Handler, 1.5T	152	\$1,784
WVA-24WN1-M16P-N	Napoleon 16 SEER Air Handler, 2T	136	\$1,797
WVA-30WN1-M16P-N	Napoleon 16 SEER Air Handler, 2.5T	136	\$1,820
WVA-36WN1-M16P-N	Napoleon 16 SEER Air Handler, 3T	187	\$2,236
WVA-42WN1-M16P-N	Napoleon 16 SEER Air Handler, 3.5T	187	\$2,259
WVA-48WN1-M16P-N	Napoleon 16 SEER Air Handler, 4T	187	\$2,309
WVA-60WN1-M16P-N	Napoleon 16 SEER Air Handler, 5T	187	\$2,328

ADD-ON ELECTRIC HEATER

MODEL	DESCRIPTION	WEIGHT (LBS)	MSRP/MAP
WHK-05A	5KW Electric Heater, used on 1.5 - 5T	4.6	\$197
WHK-08A	7.5KW Electric Heater, used on 1.5 - 2T	5.3	\$263
WHK-10A	10KW Electric Heater, used on 2-5T	5.3	\$278
WHK-15B	15KW Electric Heater, used on 3 - 5T	9.3	\$468
WHK-20B	20KW Electric Heater, used on 3 - 5T	9.9	\$539

HEAT PUMP - AIR HANDLER MATCHUP CHART

NOTE: HSPF RATED TO REGION IV

HEAT PUMP	AIR HANDLER	AHRI#	SEER	HSPF
NT15H024 A	WVA-24WN1-M16P-N	202397609	15	8.5
NT15H030A	WVA-30WN1-M16P-N	202397611	15	9
NT15H036A	WVA-36WN1-M16P-N	202424296	15	9
NT15H042A	WVA-42WN1-M16P-N	202397613	15	9
NT15H048A	WVA-48WN1-M16P-N	202397612	15	9

IMPORTANT: PRODUCT MUST BE REGISTERED FOR FULL WARRANTY



DUCTLESS

INVERTER/DUCTLESS SPLIT



FEATURES & BENEFITS

- Sleep Mode
- Auto-Restart
- Louver Position Memory Function

1 YEAR PARTS
LIMITED WARRANTY

5 YEAR COMPRESSOR
LIMITED WARRANTY

NC19 Series

MODEL	DETAILS	SEER	HSPF4 - HSPF5	HEATING CAPACITY - COOLING CAPACITY	MAX FUSE/ BREAKER (AMP)	LINE SET DIAMETER LIQUID (IN)	LINE SET DIAMETER SUCTION (IN)	WEIGHT (LBS)	MSRP
NC19-12F-B	Ductless Air Conditioner - Set Note: Shipped in 2 PCS. NC19-12F-I-B, NC19-12F-O-B	19	n/a - n/a	n/a - 12,000	20	1/4	1/2	92	\$1,274
NC19-18F-B	Ductless Air Conditioner - Set Note: Shipped in 2 PCS. NC19-18F-I-B, NC19-18F-O-B	19	n/a - n/a	n/a - 17,000	20	1/4	1/2	103	\$1,830
NC19-24F-B	Ductless Air Conditioner - Set Note: Shipped in 2 PCS. NC19-24F-I-B, NC19-24F-O-B	19	n/a - n/a	n/a - 22,000	25	3/8	5/8	135	\$2,468



FEATURES & BENEFITS

- Sleep Mode
- Auto Restart
- Auto Defrosting
- Louver Position Memory Function
- Functions in temperatures as low as -15C

6 YEAR PARTS
LIMITED WARRANTY

6 YEAR COMPRESSOR
LIMITED WARRANTY

NHAS Series

MODEL	DETAILS	SEER	HSPF4 - HSPF5	HEATING CAPACITY - COOLING CAPACITY	MAX FUSE/ BREAKER (AMP)	LINE SET DIAMETER LIQUID (IN)	LINE SET DIAMETER SUCTION (IN)	WEIGHT (LBS)	MSRP
NHAS-12	Ductless Heat Pump - Set Note: Shipped in 2 PCS. NHAS-12-I, NHAS-12-O	20	9.5 - 8	12,000 - 12,000	15	1/4	1/2	105	\$1,539
NHAS-18	Ductless Heat Pump - Set Note: Shipped in 2 PCS. NHAS-18-I, NHAS-18-O	20	10 - 8	18,000 - 18,000	20	1/4	1/2	118	\$2,106
NHAS-24	Ductless Heat Pump - Set Note: Shipped in 2 PCS. NHAS-24-I, NHAS-24-O	20	9.5 - 8	24,000 - 24,000	25	3/8	5/8	152	\$2,666



FEATURES & BENEFITS

- Sleep Mode
- Auto Restart
- Energy Star Rated
- Auto Defrosting
- Louver Position Memory Function
- Hyper Heat - Functions in temperatures as low as -25C

6 YEAR PARTS
LIMITED WARRANTY

6 YEAR COMPRESSOR
LIMITED WARRANTY

NH21 Series

MODEL	DETAILS	SEER	HSPF4 - HSPF5	HEATING CAPACITY - COOLING CAPACITY	MAX FUSE/ BREAKER (AMP)	LINE SET DIAMETER LIQUID (IN)	LINE SET DIAMETER SUCTION (IN)	WEIGHT (LBS)	MSRP
NH21-12F	Ductless Heat Pump - Set Note: Shipped in 2 PCS. NH21-12F-I, NH21-12F-O	21	9.8 - 7.7	12,000 - 12,000	15	1/4	1/2	110	\$1,937
NH21-18F	Ductless Heat Pump - Set Note: Shipped in 2 PCS. NH21-18F-I, NH21-18F-O	21	10 - 8	18,000 - 18,000	20	1/4	1/2	145	\$2,567
NH21-24F	Ductless Heat Pump - Set Note: Shipped in 2 PCS. NH21-24F-I, NH21-24F-O	21	10 - 8.3	24,000 - 25,000	25	3/8	5/8	184	\$3,109

IMPORTANT: PRODUCT MUST BE REGISTERED FOR FULL WARRANTY

Wolf Steel reserves the right to make changes to prices and product without notice. Products may not be exactly as shown.





FEATURES & BENEFITS

- Sleep Mode Function
- Auto Restart
- Energy Star Rated
- Auto Defrosting
- Louver Position Memory
- Hyper Heat - Functions in temperatures as low as -30C



NH25 Series

MODEL	DETAILS	SEER	HSPF4 - HSPF5	HEATING CAPACITY - COOLING CAPACITY	MAX FUSE/BREAKER (AMP)	LINE SET DIAMETER LIQUID (IN)	LINE SET DIAMETER SUCTION (IN)	WEIGHT (LBS)	MSRP
NH25-09F	Ductless Heat Pump - Set Note: Shipped in 2 PCS. NH25-09F-I, NH25-09F-O	25	11.2 - 9	10,900 - 9,000	15	1/4	3/8	119	\$2,256
NH25-12F	Ductless Heat Pump - Set Note: Shipped in 2 PCS. NH25-12F-I, NH25-12F-O	25	12 - 9.9	11,800 - 12,000	15	1/4	1/2	121	\$2,375
NH25-18F	Ductless Heat Pump - Set Note: Shipped in 2 PCS. NH25-18F-I, NH25-18F-O	25	10.3 - 8.8	17,000 - 18,000	25	1/4	1/2	150	\$2,946
NH25-24F	Ductless Heat Pump - Set Note: Shipped in 2 PCS. NH25-24F-I, NH25-24F-O	25	11.5 - 9.6	24,000 - 24,000	30	3/8	5/8	199	\$3,786
NH25-30F	Ductless Heat Pump - Set Note: Shipped in 2 PCS. NH25-30F-I, NH25-30F-O	25	9.4 - 8	30,000 - 30,000	30	3/8	5/8	200	\$3,953
NH25-36F	Ductless Heat Pump - Set Note: Shipped in 2 PCS. NH25-36F-I, NH25-36F-O	25	8.5 - 7	36,000 - 36,000	35	3/8	5/8	209	\$4,327



FEATURES & BENEFITS

- Auto Defrosting
- Auto Restart
- Multi-Zone
- Up to 4 Indoor units including Cassettes
- Functions in temperatures as low as -25C (varies on indoor and outdoor configuration)



Multi-Zone Series

MODEL	DETAILS	SEER	HSPF4 - HSPF5	HEATING CAPACITY - COOLING CAPACITY	MAX FUSE/BREAKER (AMP)	LINE SET DIAMETER LIQUID (IN)	LINE SET DIAMETER SUCTION (IN)	WEIGHT (LBS)	MSRP
NMZO-27F-B	Ductless Heat Pump - Outdoor	22	9.8 - 8	28,000 - 27,000	35	1/4	3/8	132	\$3,314
NMZO-36F-B	Ductless Heat Pump - Outdoor	16.5	9 - 7.9	39,000 - 36,000	40	1/4	3/8	189	\$4,397
NH21-09F-I	Ductless Heat Pump - Indoor	21	n/a - n/a	n/a - n/a	15	1/4	3/8	22.0	\$596
NH21-12F-I	Ductless Heat Pump - Indoor	21	9.8 - 7.7	n/a - n/a	15	1/4	1/2	22.0	\$640
NH21-18F-I	Ductless Heat Pump - Indoor	21	10 - 8	n/a - n/a	20	1/4	1/2	37.0	\$837
NH25-09F-I	Ductless Heat Pump - Indoor	25	11.2 - 9	n/a - n/a	15	1/4	3/8	25.5	\$650
NH25-12F-I	Ductless Heat Pump - Indoor	25	12 - 9.9	n/a - n/a	15	1/4	1/2	26.75	\$693
NH25-18F-I	Ductless Heat Pump - Indoor	25	10.3 - 8.8	n/a - n/a	25	1/4	1/2	35.0	\$891

THERMOSTATS

NAPOLEON THERMOSTATS



Model	Description	Weight (lbs)	MSRP
NT953H2CP	Napoleon 3H/2C 7-day Programmable Thermostat - 12 sq.in. Touchscreen	1	\$282



Model	Description	Weight (lbs)	MSRP
NT86HCEZ	Napoleon 1H/1C EZ Set Non Programmable Thermostat	1	\$83



Model	Description	Weight (lbs)	MSRP
NT853H2CP	Napoleon 3H/2C 7-day Programmable Thermostat - 4" LCD	1	\$140



Model	Description	Weight (lbs)	MSRP
NT144HCNPH	Napoleon 1H/1C Non Programmable Thermostat - Horizontal	1	\$57



Model	Description	Weight (lbs)	MSRP
NT151HCPV	Napoleon 1H/1C 5/2-day Programmable Thermostat - Vertical	1	\$76



Model	Description	Weight (lbs)	MSRP
NT144HCNPV	Napoleon 1H/1C Non Programmable Thermostat - Vertical	1	\$59

IMPORTANT: PRODUCT MUST BE REGISTERED FOR FULL WARRANTY

Wolf Steel reserves the right to make changes to prices and product without notice. Products may not be exactly as shown.



FEATURES & BENEFITS

- Designed for greater flexibility and quick installation
- Reversible compact unit with integrated hook for greater installation flexibility
- Integrated "Snap-in" drain system installed in seconds with no additional parts to buy
- Energy efficient, all to make final user save money
- Easy to balance with integrated dampers and pressure tap. No risk of installing it incorrectly and letting cold air get inside the house



Heat Recovery Ventilator

MODEL	CFM	Unit Dimensions H x W x D (in)	WEIGHT (LBS)	MSRP
NHRV65S	130	25.5 x 16.9 x 30.25	45	\$1,050

FEATURES & BENEFITS

- Reversible compact unit with integrated hook for greater installation flexibility
- No drain required; no additional parts to buy while reducing installation time
- SRE tested at Toronto's winter temperature (-10°C)
- Energy efficient, all to make final user save money
- Easy to balance with integrated dampers and pressure tap. No risk of installing it incorrectly and letting cold air get inside the house



Energy Recovery Ventilator

MODEL	CFM	Unit Dimensions H x W x D (in)	WEIGHT (LBS)	MSRP
NERV65S	130	25.5 x 16.9 x 30.25	45	\$1,265

FEATURES & BENEFITS

- The NERV2400T is the perfect solution for mid to large size homes in need for the most energy-efficient ventilation solution
- Up to 210 CFM at 0.4 in. w.g.
- High efficiency energy recovery core with a sensible recovery efficiency of 84% at 0°C and 65% at -25°C
- German made ECM motors
- Minimal power consumption of 22W and CFM/Watt of 2.9 at 64 CFM



Energy Recovery Ventilator

MODEL	CFM	Unit Dimensions H x W x D (in)	WEIGHT (LBS)	MSRP
NERV2400T	210	35.1 x 22.9 x 34.5	110	\$3,425

Control

MODEL	Unit Dimensions H x W x D (in)	WEIGHT (LBS)	MSRP
NHRVTimer	n/a	1	\$30



Control

MODEL	Unit Dimensions H x W x D (in)	WEIGHT (LBS)	MSRP
NHRVDC	n/a	1	\$96





FEATURES & BENEFITS

The Napoleon HomeShield UV Air Purification System keeps your indoor air quality at its best. HomeShield uses medical grade Philips UV lamps with flexible installation configurations to purify your home's indoor environment. Napoleon's HomeShield Full Kit can be installed in a variety of ways to filter air entering and exiting the HVAC system and is available in medical and standard grade sterilization levels.

1 YEAR PARTS LIMITED WARRANTY

90 DAYS UV LAMPS LIMITED WARRANTY

Medical Grade Air Treatment

Medical grade units contain 60 watt ultra violet lamp that produces 17 watts of UVC light

MODEL	DESCRIPTION	WEIGHT (LBS)	MSRP
UVHFS120WB	Home Shield Medical Grade Full Kit	10	\$775
UVHMS120WB	Home Shield Medical Grade Twin Lamp	9	\$595
UVHLS060W0	HomeShield Medical Grade 60W Lance	2	\$237

Standard Grade Air Treatment

Standard grade units contain 18 watt ultra violet lamp that produces 5 watts of UVC light

MODEL	DESCRIPTION	WEIGHT (LBS)	MSRP
UVLFS036WB	Home Shield Standard Grade Full Kit	10	\$476
UVLMS036WB	Home Shield Standard Grade Twin Lamp	9	\$392
UVLAS018W0	HomeShield Standard Grade 18W Furnace Lamp	2	\$236
UVLLS018W0	HomeShield Standard Grade 18W Single Lance	2	\$178
UVLAS018WB	Home Shield Standard Grade Furnace Lamp	4	\$237

Replacement Ultra Violet Lamps

MODEL	DESCRIPTION	WEIGHT (LBS)	MSRP
UVB18	HomeShield Standard Grade 18W UV Replacement Lamp	1	\$63
UVB60	HomeShield Medical Grade 60W UV Replacement Lamp	1	\$165

CONDO PACK

HIGH EFFICIENCY GAS
Furnace module with Eudura PRO ECM
multi-speed motor



FEATURES & BENEFITS

- Up to 96.8% AFUE / Thermal Efficiency
- Modular Design - 1 & 1.5 Ton units only
- Architectural Grilles Available - 15 color options available
- Three piece design allows individual component handling for easy installation and serviceability
- All indoor access to parts and maintenance activities
- Innovative, dual slide out chassis for either heating or cooling components for service - 1 & 1.5 Ton units only
- Both sections can be independantly fully or partially removed for servicing
- With spare modules, building management can do quick swap outs to maintain climate in the apartment/condo while troubleshooting non functioning units off line
- Designed for direct replacement of the individual modules at the end of their service life instead of the complete appliance
- All control harnesses are separated with modular quick disconnects, so module swap outs do not require time consuming rewiring



Wall Sleeve

Model	Weight (lbs)	Unit Dimensions H x W x D (in)
CWSMUA-TP	45	46.78 x 32.75 x 12
CWSMUA19-TP	61	46.78 x 32.75 x 19



Architectual Grilles For High Efficiency Gas

Model	Weight (lbs)	Unit Dimensions H x W x D (in)
CAGMHA-ML	22.5	44.875 x 28.875 x 1.265
CAGMHA-TP	22.5	44.875 x 28.875 x 1.265
CAGMHA-XX	22.5	44.875 x 28.875 x 1.265

IMPORTANT: For 2 Ton units, add 39 to the end of the grille model number, example: CAGMHA39-TP

CONDO PACK

HIGH EFFICIENCY GAS
Furnace module with Eudura PRO ECM
multi-speed motor

15,000 BTU

Model	BTU/h High Fire	Heating Capacity	Cooling Capacity	Return Air	Weight (lbs)	Unit Dimensions H x W x D (in)	Plenum Opening H x W (in)	MSRP
P-C15A-A12A-A	15,000	15,000	12,000	24 1/8 X 8 1/4	328	43.125 x 28 x 32	16 x 8	\$7,166
P-C15A-A18A-A	15,000	15,000	17,000	24 1/8 X 8 1/4	344	43.125 x 28 x 32	16 x 8	\$7,231
P-C15A-A24A-A	15,000	15,000	24,000	24 1/8 X 8 1/4	401	43.125 x 28 x 39	16 x 8	\$7,297

30,000 BTU

Model	BTU/h High Fire	Heating Capacity	Cooling Capacity	Return Air	Weight (lbs)	Unit Dimensions H x W x D (in)	Plenum Opening H x W (in)	MSRP
P-C30A-A12A-A	30,000	30,000	12,000	24 1/8 X 8 1/4	328	43.125 x 28 x 32	16 x 8	\$7,166
P-C30A-A18A-A	30,000	30,000	17,000	24 1/8 X 8 1/4	344	43.125 x 28 x 32	16 x 8	\$7,231
P-C30A-A24A-A	30,000	30,000	24,000	24 1/8 X 8 1/4	387	43.125 x 28 x 39	16 x 8	\$7,297

40,000 BTU

Model	BTU/h High Fire	Heating Capacity	Cooling Capacity	Return Air	Weight (lbs)	Unit Dimensions H x W x D (in)	Plenum Opening H x W (in)	MSRP
P-C40A-A12A-A	40,000	40,000	12,000	24 1/8 X 8 1/4	328	43.125 x 28 x 32	16 x 8	\$7,362
P-C40A-A18A-A	40,000	40,000	17,000	24 1/8 X 8 1/4	344	43.125 x 28 x 32	16 x 8	\$7,429
P-C40A-A24A-A	40,000	40,000	24,000	24 1/8 X 8 1/4	401	43.125 x 28 x 39	16 x 8	\$7,495

50,000 BTU

Model	BTU/h High Fire	Heating Capacity	Cooling Capacity	Return Air	Weight (lbs)	Unit Dimensions H x W x D (in)	Plenum Opening H x W (in)	MSRP
P-C50A-A12A-A	50,000	50,000	12,000	24 1/8 X 8 1/4	328	43.125 x 28 x 32	16 x 8	\$7,561
P-C50A-A18A-A	50,000	50,000	17,000	24 1/8 X 8 1/4	346	43.125 x 28 x 32	16 x 8	\$7,625
P-C50A-A24A-A	50,000	50,000	24,000	24 1/8 X 8 1/4	387	43.125 x 28 x 39	16 x 8	\$7,692

OPTIONS/ACCESSORIES

MODEL	DESCRIPTION	MSRP/MAP
CWSMUA19-TP	Condo Pack 19" Wall Sleeve	\$385
CWSMUA-TP	Condo Pack 12" Wall Sleeve	\$336
CAGMHA-ML	Architectural Grilles - High Efficiency Gas - Mill Finish, Unpainted	\$398
CAGMHA-TP	Architectural Grilles - High Efficiency Gas - Painted Standard Taupe	\$556
CAGMHA-XX	Architectural Grilles for High Efficiency Gas - Painted Custom Color	Request Quote

IMPORTANT: For 2 Ton units, add 39 to the end of the grille code, example: CAGMHA39-TP

IMPORTANT: PRODUCT MUST BE REGISTERED FOR FULL WARRANTY

Wolf Steel reserves the right to make changes to prices and product without notice. Products may not be exactly as shown.



CONDO PACK

HIGH EFFICIENCY ELECTRIC

Furnace module with Eudura PRO ECM multi-speed motor



FEATURES & BENEFITS

- Modular Design
- Both sections can be independently fully or partially removed for servicing - 1 & 1.5 Ton units
- Architectural Grilles Available - 15 color options available
- Three piece design allows individual component handling for easy installation and serviceability
- All indoor access to parts and maintenance activities
- Innovative, dual slide out chassis for either heating or cooling components for service - 1 & 1.5 Ton units only
- With spare modules, building management can do quick swap outs to maintain climate in the apartment/condo while troubleshooting non functioning units off line
- Designed for direct replacement of the individual modules at the end of their service life instead of the complete appliance
- All control harnesses are separated with modular quick disconnects, so module swap outs do not require time consuming rewiring



Wall Sleeve

Model	Weight (lbs)	Unit Dimensions H x W x D (in)
CWSMUA-TP	45	46.78 x 32.75 x 12
CWSMUA19-TP	61	46.78 x 32.75 x 19



Architectural Grilles For High Efficiency Electric

Model	Weight (lbs)	Unit Dimensions H x W x D (in)
CAGMMA-ML	22.5	44.875 x 28.875 x 1.265
CAGMMA-TP	22.5	44.875 x 28.875 x 1.265
CAGMMA-XX	22.5	44.875 x 28.875 x 1.265

IMPORTANT: For 2 Ton units, add 39 to the end of the grille code, example: CAGMMA39-TP

CONDO PACK

HIGH EFFICIENCY ELECTRIC

Furnace module with Eudura PRO ECM multi-speed motor

5 Kilowatt

Model	kW Heating 240v / 208v	Heating Capacity	Cooling Capacity	Return Air	Weight (lbs)	Unit Dimensions H x W x D (in)	Plenum Opening H x W (in)	MSRP
P-E05A-A12A-A	4.8 / 3.6	16,300	16,300	24 1/8 X 7 1/8	321	43.125 x 28 x 32	16 x 8	\$6,608
P-E05A-A18A-A	4.8 / 3.6	16,300	17,000	24 1/8 X 7 1/8	326	43.125 x 28 x 32	16 x 8	\$6,674
P-E05A-A24A-A	4.8 / 3.6	16,300	24,000	24 1/8 X 7 1/8	365	43.125 x 28 x 39	16 x 8	\$6,739

7.5 Kilowatt

Model	kW Heating 240v / 208v	Heating Capacity	Cooling Capacity	Return Air	Weight (lbs)	Unit Dimensions H x W x D (in)	Plenum Opening H x W (in)	MSRP
P-E07A-A12A-A	7.3 / 5.5	24,600	12,000	24 1/8 X 7 1/8	321	43.125 x 28 x 32	16 x 8	\$6,805
P-E07A-A18A-A	7.3 / 5.5	24,600	17,000	24 1/8 X 7 1/8	331	43.125 x 28 x 32	16 x 8	\$6,869
P-E07A-A24A-A	7.3 / 5.5	24,600	24,000	24 1/8 X 7 1/8	397	43.125 x 28 x 39	16 x 8	\$6,937

10 Kilowatt

Model	kW Heating 240v / 208v	Heating Capacity	Cooling Capacity	Return Air	Weight (lbs)	Unit Dimensions H x W x D (in)	Plenum Opening H x W (in)	MSRP
P-E10A-A12A-A	9.6 / 7.2	32,700	12,000	24 1/8 X 7 1/8	330	43.125 x 28 x 32	16 x 8	\$7,002
P-E10A-A18A-A	9.6 / 7.2	32,700	17,000	24 1/8 X 7 1/8	330	43.125 x 28 x 32	16 x 8	\$7,067
P-E10A-A24A-A	9.6 / 7.2	32,700	24,000	24 1/8 X 7 1/8	370	43.125 x 28 x 39	16 x 8	\$7,133

15 Kilowatt

Model	kW Heating 240v / 208v	Heating Capacity	Cooling Capacity	Return Air	Weight (lbs)	Unit Dimensions H x W x D (in)	Plenum Opening H x W (in)	MSRP
P-E15A-A12A-A	14.4 / 10.8	49,100	12,000	24 1/8 X 7 1/8	321	43.125 x 28 x 32	16 x 8	\$7,198
P-E15A-A18A-A	14.4 / 10.8	49,100	17,000	24 1/8 X 7 1/8	345	43.125 x 28 x 32	16 x 8	\$7,264

OPTIONS/ACCESSORIES

MODEL	DESCRIPTION	MSRP/MAP
CWSMUA19-TP	Condo Pack 19" Wall Sleeve	\$385
CWSMUA-TP	Condo Pack 12" Wall Sleeve	\$336
CAGMMA-ML	Architectural Grilles - Mid-Efficiency Gas & Electric - Mill Finish, Unpainted	\$373
CAGMMA-TP	Architectural Grilles - High Efficiency Gas - Painted Standard Taupe	\$556
CAGMMA-XX	Architectural Grilles for High Efficiency Gas - Painted Custom Color	Request Quote

IMPORTANT: For 2 Ton units, add 39 to the end of the grille code, example: CAGMMA39-TP

IMPORTANT: PRODUCT MUST BE REGISTERED FOR FULL WARRANTY

Wolf Steel reserves the right to make changes to prices and product without notice. Products may not be exactly as shown.



HIGH EFFICIENCY CFM AT EXTERNAL STATIC PRESSURE, INCHES WATER COLUMN

MODEL	HEATING	SETTING	Speed Tap#	0.1"	0.2"	0.3"	0.4"	0.5"
-------	---------	---------	------------	------	------	------	------	------

C15A	15 kBTU/h	FACTORY	5	440	390	330	295	240
		HIGH	4	570	530	495	470	415

C30A	30 kBTU/h	FACTORY	4	770	745	730	705	695
		HIGH	3	770	745	730	705	695

C40A	40 kBTU/h	FACTORY	3	770	745	730	705	695
		HIGH	2	925	910	885	870	840

C50A	50 kBTU/h	FACTORY	2	925	910	885	870	840
		HIGH	N/A	N/A	N/A	N/A	N/A	N/A

MODEL	HEATING	SETTING	Speed Tap#	0.1"	0.2"	0.3"	0.4"	0.5"
-------	---------	---------	------------	------	------	------	------	------

A12A	1.0 ton	FACTORY	5	440	390	330	295	240
		HIGH	4	570	530	495	470	415

A18A	1.5 ton	FACTORY	1	645	600	560	530	470
		HIGH	3	770	745	730	705	695

A24A	2.0 ton	FACTORY	1	830	810	780	760	720
		HIGH	2	925	910	885	870	840

AIRFLOW - 1.0 & 1.5 TON MODELS - SCFM AT EXTERNAL STATIC PRESSURE IN W.C.

HEATING								
MODEL	BTU/H	SETTING	SPEED	0.1"	0.2"	0.3"	0.4"	0.5"
S26A	26K	FACTORY	5	430	430	405	330	285
		HIGH	4	565	535	525	490	420
S38A	38K	FACTORY	4	565	535	525	490	420
		HIGH	3	3770	745	730	710	690
S51A	51K	FACTORY	3	770	745	730	710	690
		HIGH	2	930	900	885	865	860
S64A	64K	FACTORY	2	930	900	885	865	860
		HIGH	N/A	N/A	N/A	N/A	N/A	N/A
COOLING								
MODEL	BTU/H	SETTING	SPEED	0.1"	0.2"	0.3"	0.4"	0.5"
A12A	1.0 TON	FACTORY	5	430	430	405	330	285
		HIGH	4	565	535	525	490	420
A18A	1.5 TON	FACTORY	1	665	630	620	575	500
		HIGH	3	770	745	730	710	690

AIRFLOW - 2.0 TON MODELS - SCFM AT EXTERNAL STATIC PRESSURE IN W.C.

HEATING								
MODEL	BTU/H	SETTING	SPEED	0.1"	0.2"	0.3"	0.4"	0.5"
S26A	26K	FACTORY	5	455	410	380	330	290
		HIGH	4	555	530	500	475	430
S38A	38K	FACTORY	4	555	530	500	475	430
		HIGH	3	770	755	725	710	675
S51A	51K	FACTORY	3	790	770	740	715	695
		HIGH	2	955	935	910	885	855
S64A	64K	FACTORY	2	955	935	910	885	855
		HIGH	N/A	N/A	N/A	N/A	N/A	N/A
COOLING								
MODEL	BTU/H	SETTING	SPEED	0.1"	0.2"	0.3"	0.4"	0.5"
A24A	2.0 TON	FACTORY	1	870	840	820	795	775
		HIGH	2	955	935	910	885	855

IMPORTANT: PRODUCT MUST BE REGISTERED FOR FULL WARRANTY

Wolf Steel reserves the right to make changes to prices and product without notice. Products may not be exactly as shown.

OUT-OF-THE-BOX THINKING... ON THE INSIDE

The new Condo Pack from Napoleon is the best option for any residential low or mid-rise applications.



INDUSTRY STANDARD FOOTPRINT

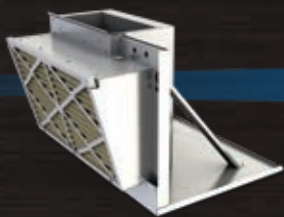
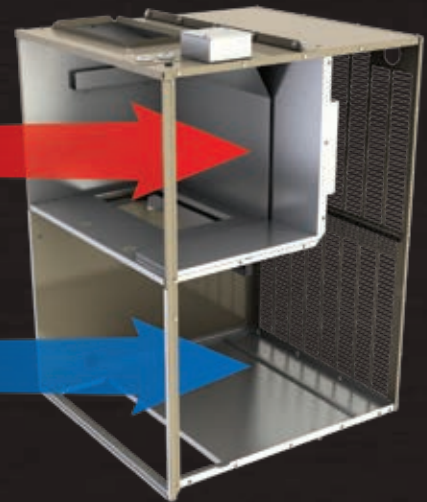
MODULAR DESIGN FOR INDIVIDUAL
COMPONENT HANDLING

ALL INDOOR
ACCESS TO PARTS

GAS HIGH
EFFICIENCY

GAS
MID EFFICIENCY

ELECTRIC



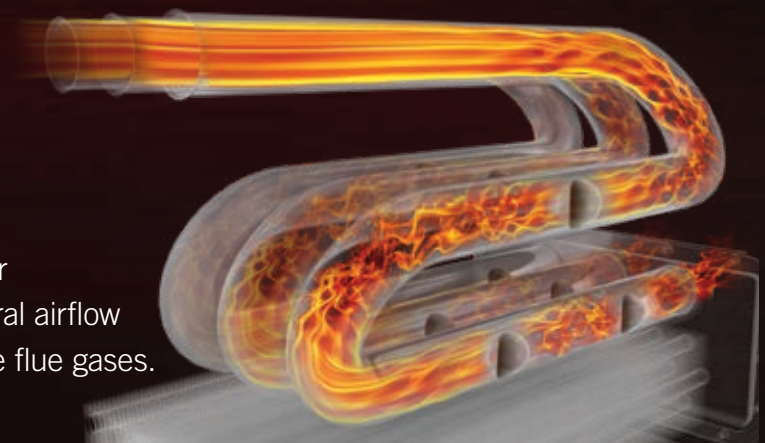
BLOWER ONLY

AIR CONDITIONER

vortex
TURBULATOR

**Stainless steel primary and
secondary heat exchanger**

Vortex[™] turbulator inside the heat exchanger increases efficiency by disrupting the natural airflow which extracts the maximum heat from the flue gases.



**Available for high efficiency units only.*

BETTER PERFORMANCE

Condo Pack delivers up to 96.8% AFUE (90% thermal efficiency) and uses high performance compressors delivering up to 10.8 EER.

5 YEAR PARTS LIMITED WARRANTY

10 YEAR FURNACE MODULE REPLACEMENT LIMITED WARRANTY

20 YEAR HEAT EXCHANGER LIMITED WARRANTY

**Refer to warranties for more details.*



Napoleon designed the Condo Pack for easy installation and maintenance, so you and your customer will save time and money:

- No exterior equipment to maintain – everything is accessed from inside
- Pre-wired and pre-charged
- Backed by industry leading warranties
- Dual slide out modules for simple servicing

CUSTOM COLOR OPTIONS



**Color swatches are for reference only and are not meant to be used for color matching or final color approval. Actual shades may vary. Napoleon is not responsible for color matches made with this chart.*

www.condopack.com

NAPOLEON - CELEBRATING OVER 40 YEARS OF HOME COMFORT PRODUCTS



24 Napoleon Road, Barrie, Ontario, L4M 0G8
103 Miller Drive, Crittenden, Kentucky, USA 41030
7200 Trans Canada Highway, Montreal, Quebec H4T 1A3

PHONE: 888-721-8324
napoleon.com

Printed in Canada
AD-PRICENAPCDN-HVAC-20 01/2020